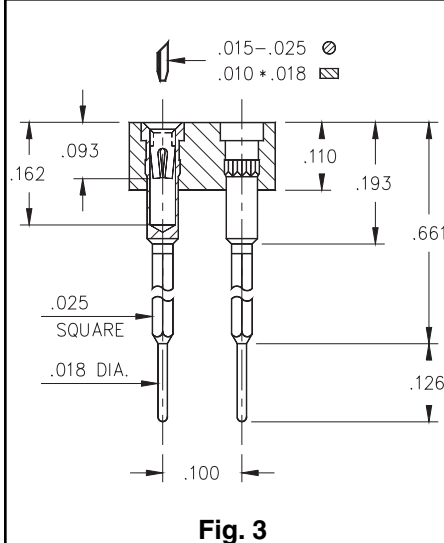
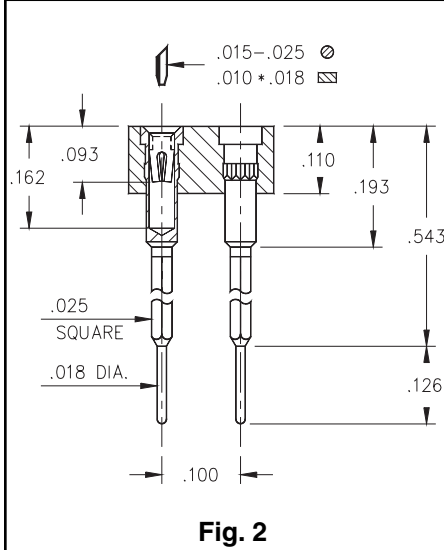


- Wrapost / Solder tail combination for interconnect purposes are available in 3 lengths using pin numbers:
 426...001 uses pin # 2601
 426...002 uses pin # 2602
 426...003 uses pin # 2603
 See page 163 for details.
- Hi-Rel, 4-finger BeCu #30 contact is rated at 3 amps. See page 208 for details.
- Insulators are high temp. thermoplastic.



Ordering Information

Fig. 1	Series 426...001 1 Level Wrapost
	426-XX-2__-41-001000 Specify # of pins → 02-64
Fig. 2	Series 426...002 2 Level Wrapost
	426-XX-2__-41-002000 Specify # of pins → 02-64
Fig. 3	Series 426...003 3 Level Wrapost
	426-XX-2__-41-003000 Specify # of pins → 02-64



XX=Plating Code
See Below

For RoHS compliance
 select ◊ plating code.

SPECIFY PLATING CODE XX=	13 ◊	93	43 ◊
Sleeve (Pin)	10μ" Au	200μ" Sn/Pb	200μ" Sn
Contact (Clip)	30μ" Au	30μ" Au	30μ" Au